

PSS # 10014558 | 350 bags | SSBR-90923 | Oct 24 | Test Coffee Exporter Co.

Description: BRAZIL ARABICA COFFEE NY 6 FC BICA CROP 23/24 | OIC: 8245 | Lot Number: 12A654

Digital Analysis Summary:

Total Defects 23.36% Count: 139	Primary Defects 4.71% Count: 28	Secondary Defects 18.66% Count: 111	Foreign Matter 0.0% Count: 0	Inspected Seeds 0595 Weight: 79g	COB Tipo 6 Eq. Defects: 116
----------------------------------------------	----------------------------------------------	--------------------------------------------------	-------------------------------------------	-----------------------------------------------	------------------------------------------

Sample evaluated using model: 224_MCL_RNXT_ARA_BRA_MIXEDV4_U97C | File name: SampleTest.hdf5 | Sample status: Approved

Cupping Analysis (Lab):

Physical Aspect: Good

Cupping Results: Features a clean cup and bold body with a slightly acetic note

Cupping Score: 80.25

Cupping results evaluated by Sucafina Brasil Quality Lab

Proportional Dominant Colors:

Color	R value	G value	B value	Occurence
1	156	152	118	39.43 %
2	131	132	105	29.55 %
3	178	174	137	24.43 %
4	101	97	74	6.59 %



Proportional dominant color, identified by K-Means clustering, represents the most frequently occurring colors in the sample

Screen Size Distribution:

Screen	Quantity	Individual %	Cumulative %
Screen 10-:	16	2.69%	99.99%
Screen 11:	16	2.69%	97.30%
Screen 12:	15	2.52%	94.61%
Screen 13:	27	4.54%	92.09%
Screen 14:	58	9.75%	87.55%
Screen 15:	62	10.42%	77.80%
Screen 16:	102	17.14%	67.38%
Screen 17:	132	22.18%	50.24%
Screen 18:	117	19.66%	28.06%
Screen 19+:	50	8.4%	8.40%

Cumulative % represent the sum from the current screen to the last

Classification Methods:

Method	Eq. Defects	Type
COB	116	Tipo 6
NY	158	NY 6

Methods listed in the AI model

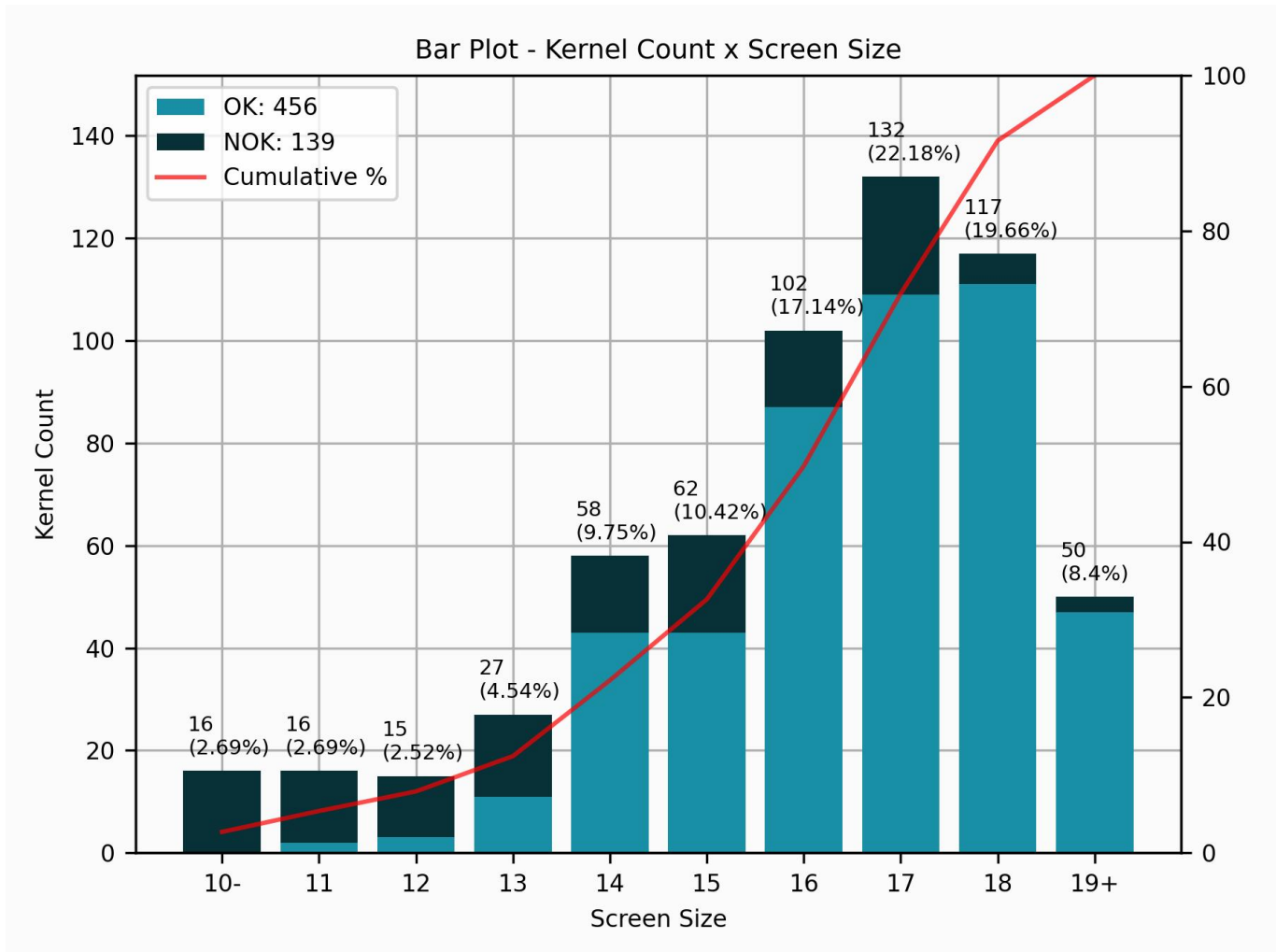
Classes Distribution:

Class Name	Quantity	Percentage	Sub-Class
Black:	0	0.0%	PD
Broken:	50	8.4%	SD
Floater:	0	0.0%	SD
Fox Bean:	8	1.34%	OK
Husk:	0	0.0%	SD
Immature:	30	5.04%	SD
Insect Dam.:	10	1.68%	SD
Ok:	448	75.29%	OK
Parchment:	1	0.17%	SD
Pod:	0	0.0%	SD
Rocks:	0	0.0%	FM
Shell:	20	3.36%	SD
Sour:	28	4.71%	PD

PD - Primary Defects, SD - Secondary Defects, FM - Foreign Matter

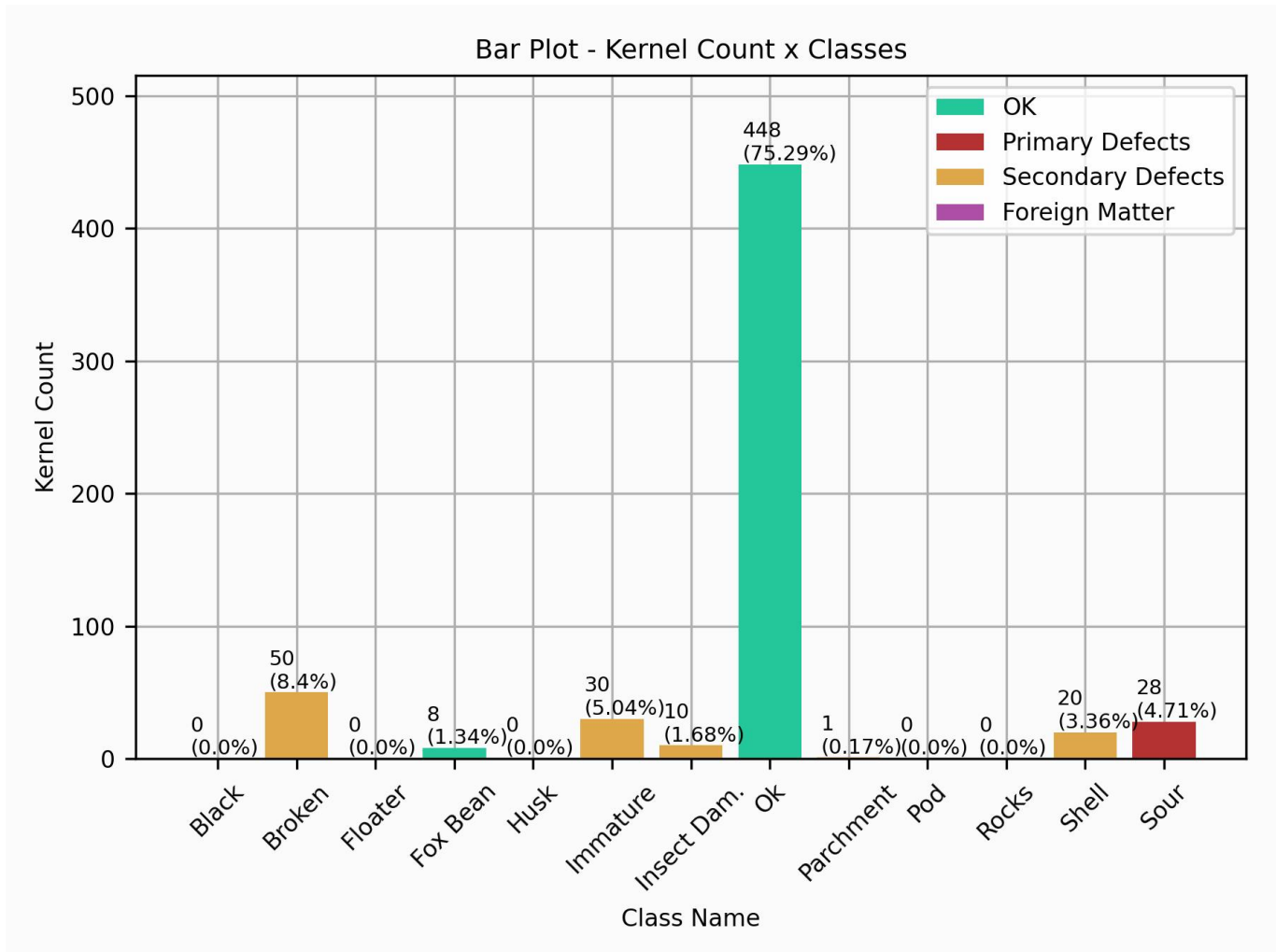
PSS # 10014558 | 350 bags | SSBR-90923 | Oct 24 | Test Coffee Exporter Co.

Screen Size Distribution:



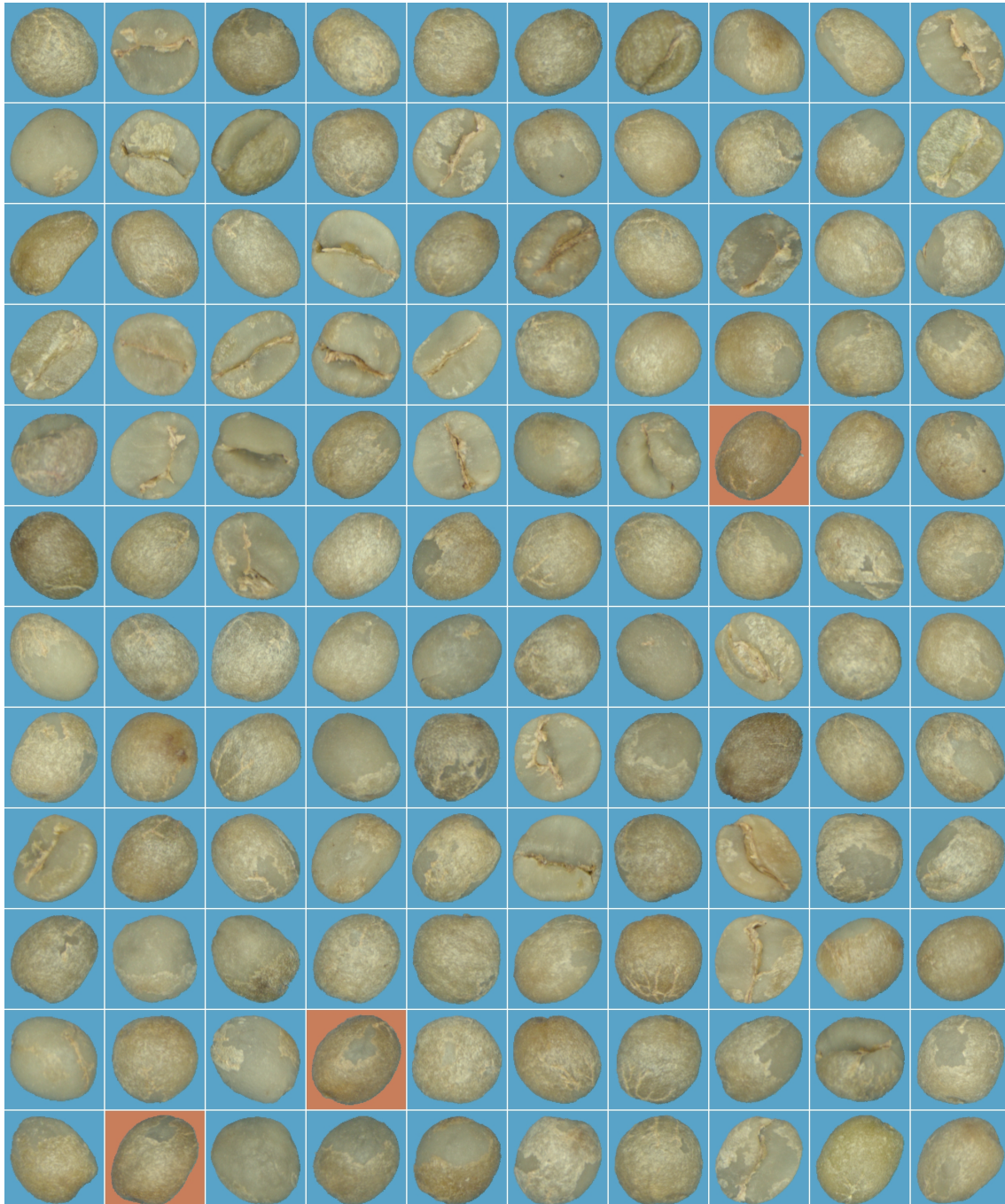
PSS # 10014558 | 350 bags | SSBR-90923 | Oct 24 | Test Coffee Exporter Co.

Classes Distribution:



PSS # 10014558 | 350 bags | SSBR-90923 | Oct 24 | Test Coffee Exporter Co.

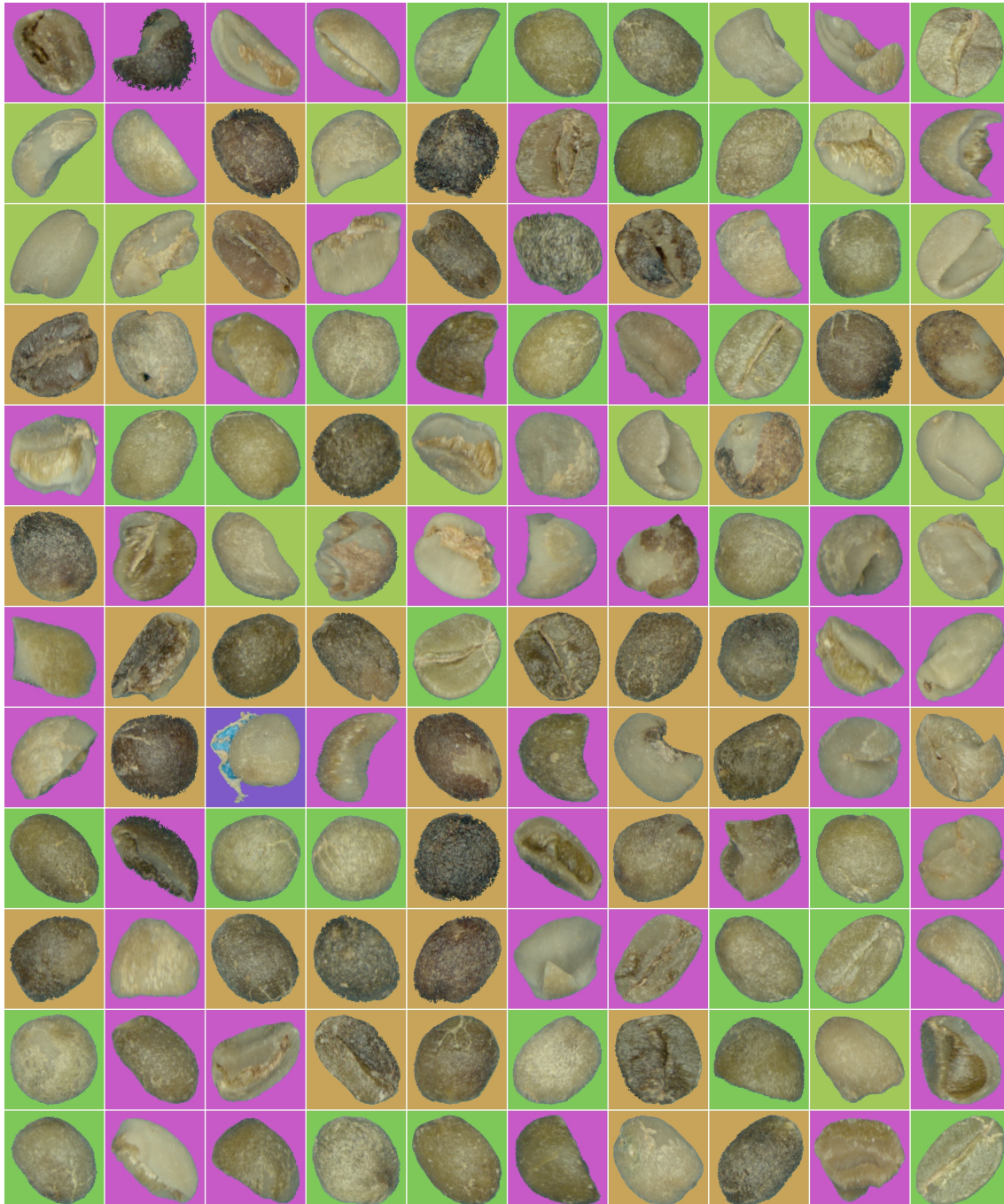
Sample Images - Non Defective Seeds:



Fox Bean Ok

PSS # 10014558 | 350 bags | SSBR-90923 | Oct 24 | Test Coffee Exporter Co.

Sample Images - Defective Seeds:



Black
 Broken
 Floater
 Husk
 Immature
 Insect Dam.
 Parchment
 Pod
 Rocks
 Shell
 Sour